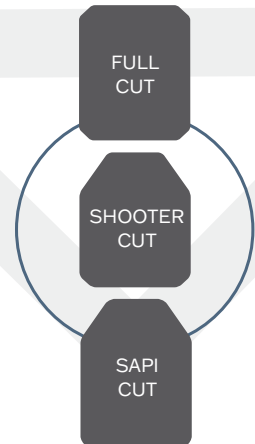
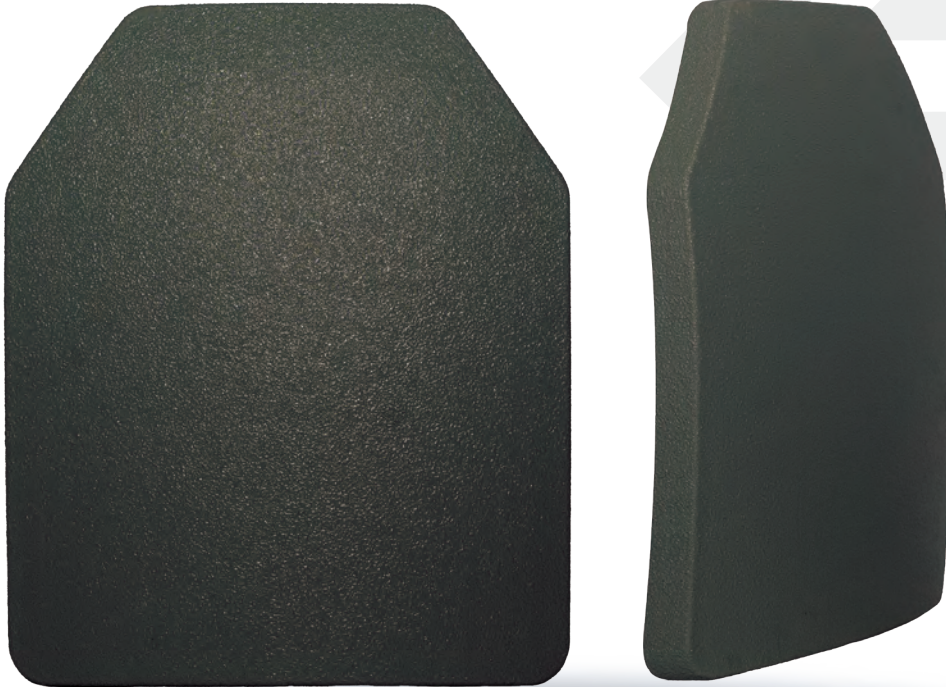




**SLATE
SOLUTIONS**

D2751

Level III Plate



FEATURES

- ◇ Made with UHMWPE materials and special processing techniques to create a lighter, thinner and more durable plate
- ◇ NIJ 0101.06 Certified Level III, Model D2751
- ◇ Multi-Curve design fits to the contours of the body for maximum comfort
- ◇ Coated with Polyurea to protect against liquids, chemicals and harsh elements
- ◇ Rugged, reliable, and stress fracture resistant
- ◇ Multi-hit capabilities

Special Threat Performance

- ◇ 5.56 x 45mm (M193 Ball)
- ◇ 7.62 x 39mm M43 (MSC)
- ◇ 7.62 x 51mm (M-80 Ball)

Specifications

- ◇ NIJ Level III
- ◇ Stand Alone
- ◇ Multi-Curve (*based on size)
- ◇ Thickness (in): 1.05"
- ◇ 5 year Warranty

Size and Weight Chart

Size	Curvature	Cut	Weight
6 x 6	Single Curve	Full	0.75 lbs / 0.34 kg
6 x 8	Single Curve	Full	1.00 lbs / 0.45 kg
8 x 10	Multi Curve	Shooter	1.60 lbs / 0.72 kg
10 x 12	Multi Curve	Shooter	2.30 lbs / 1.04 kg
XS	Multi Curve	SAPI	1.70 lbs / 0.77 kg
SM	Multi Curve	SAPI	2.10 lbs / 0.95 kg
MD	Multi Curve	SAPI	2.40 lbs / 1.09 kg
LG	Multi Curve	SAPI	2.70 lbs / 1.22 kg
XL	Multi Curve	SAPI	3.10 lbs / 1.41 kg

Tolerances: +/- .25" - +/- 0.25 lbs



**SLATE
SOLUTIONS**

7060 W. State Road 84, Suite 12, Davie, FL 33317
info@SlateSolutions.com | SlateSolutions.com

754.200.6752