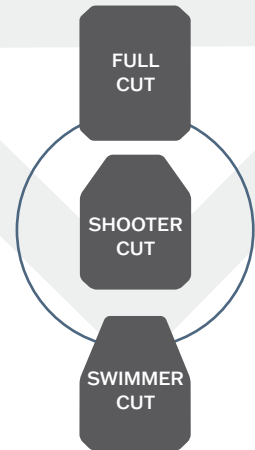
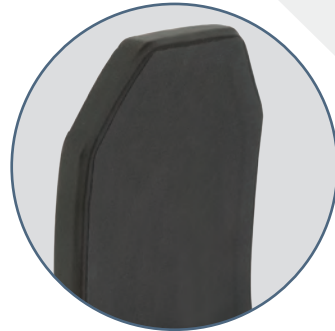
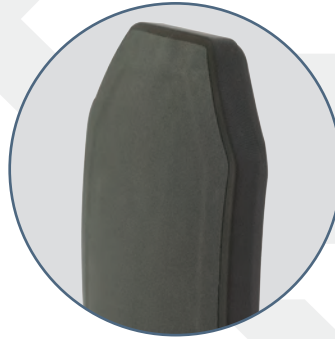




**SLATE  
SOLUTIONS**

**H3101M**

**Level III+ Plate**



## FEATURES

- ◇ Made with Ceramic and UHMWPE materials which are processed to create a lighter, thinner plate, high performing plate
- ◇ NIJ 0101.06 Level III+, Model H3101M
- ◇ User-friendly design fits to the contours of the body for maximum safety and comfort
- ◇ Rugged, reliable, and stress fracture resistant
- ◇ Fully sealed to protect against liquids, chemicals, and harsh elements

## Special Threat Performance

- ◇ 5.56 x 45mm (M193 Ball)
- ◇ 5.56 x 45mm (M855/SS109)
- ◇ 5.56 x 45mm (M855A1)
- ◇ 7.62 x 39mm, M43 (MSC)
- ◇ 7.62 x 39mm (API BZ)
- ◇ 7.62. x 51mm (M-80 Ball)
- ◇ 7.62 x 54R (LPS)

## Specifications

- ◇ NIJ Level III+
- ◇ Stand Alone
- ◇ Multi-Curve (\*based on size)
- ◇ Thickness: 1"
- ◇ 10 year Warranty

## Size and Weight Chart

Size	Curvature	Cut	Weight
6 x 6	Single Curve	Full	1.60 lbs / 0.72 kg
6 x 8	Single Curve	Full	2.20 lbs / 1.00 kg
8 x 10	Multi-Curve	Full	2.90 lbs / 1.30 kg
8 x 10	Multi-Curve	Shooter	2.70 lbs / 1.20 kg
10 x 12	Multi-Curve	Full	4.70 lbs / 2.10 kg
10 x 12	Multi-Curve	Shooter	4.30 lbs / 2.00 kg
10 x 12	Multi-Curve	Swimmer	4.10 lbs / 1.90 kg
11 x 14	Multi-Curve	Shooter	6.60 lbs / 2.90 kg

Tolerances: +/- .25" - +/- 0.25 lbs



**SLATE  
SOLUTIONS**

7060 W. State Road 84, Suite 12, Davie, FL 33317  
info@SlateSolutions.com | SlateSolutions.com

**754.200.6752**